

# Standard Wall Panel Range



**U = 0.19**

**EXTERNAL -**  
Brickwork with 50mm cavity

- Reflective breather membrane
- 9mm OSB
- 140mm studwork / 120mm insulation
- Vapour control layer
- 25mm service battens

**INTERNAL -** 12.5mm plasterboard + skim

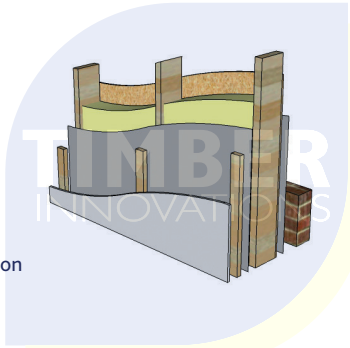


**U = 0.15**

**EXTERNAL -**  
Brickwork with 50mm cavity

- Reflective breather membrane
- 9mm OSB
- 140mm studwork / 120mm insulation
- Reflective vapour control layer
- 25mm service battens

**INTERNAL -** 12.5mm plasterboard + skim



**U = 0.19**

**EXTERNAL -**  
Brickwork with 50mm cavity

- Breather membrane
- 142mm SIPs panel
- Vapour control layer
- 25mm service batten

**INTERNAL -** 12.5mm plasterboard + skim



**U = 0.15**

**EXTERNAL -**  
Brickwork with 50mm cavity

- Reflective breather membrane
- 172mm SIPs panel
- Vapour control layer
- 25mm service battens

**INTERNAL -** 12.5mm plasterboard + skim

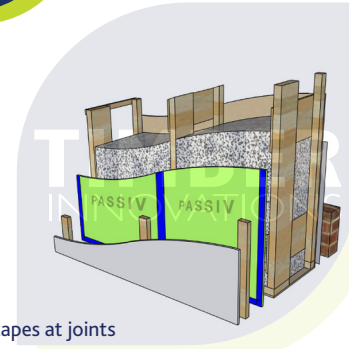


**U = 0.11 Breathable**

**EXTERNAL -**  
Brickwork with 50mm cavity

- Reflective breather membrane
- Breathable fibre-board sheathing
- Breathable/natural insulation
- Larsen stud wall make-up
- Vapour-check OSB with air-tight tapes at joints
- 25mm service battens

**INTERNAL -** 12.5mm plasterboard + skim

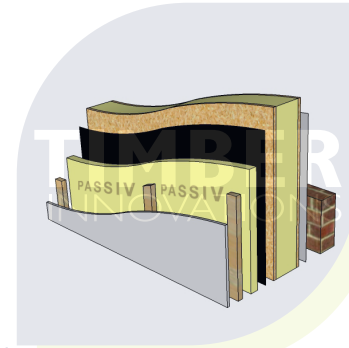


**U = 0.11 SIPS**

**EXTERNAL -**  
Brickwork with 50mm cavity

- Reflective breather membrane
- 172mm SIPs panel
- Vapour control layer
- 40mm Insulation layer – site fitted
- 25mm service battens – site fitted

**INTERNAL -** 12.5mm plasterboard + skim



We can accommodate any U-value either as TIPS, SIPs or Passiv solutions.  
Please discuss your project-specific requirements with the team.

# Standard Wall Panel Range

## ACOUSTICS



- External walls: Acoustic performance dependant on choice of façade claddings - talk to our team for advice
- Robust standard detail generally E-WT-2 for party walls
- We have experience with enhanced panel make-ups to address critical acoustic specifications

## TECHNICAL



- All timbers are from sustainable sources with PEFC Certification
- In-house engineering & design resources for best efficiency at early stages of every project
- Structural Timber Association "GOLD" status for Timber Innovations
- Large format panels can be handled in our production facility
- Our Passiv Innovations system has airtightness solutions down to Passive House levels of performance: Discuss your requirements with our team

## FIRE



- Typically single layer plasterboard linings by others for 30 mins fire resistance or double layer for 60 mins
- Discuss project-specific requirements with our team at design-stage
- During construction an independent Fire Risk Assessment report should be commissioned by others to establish what mitigation (if any) needs to be priced for the superstructure - for the construction stage ahead of finishes being completed